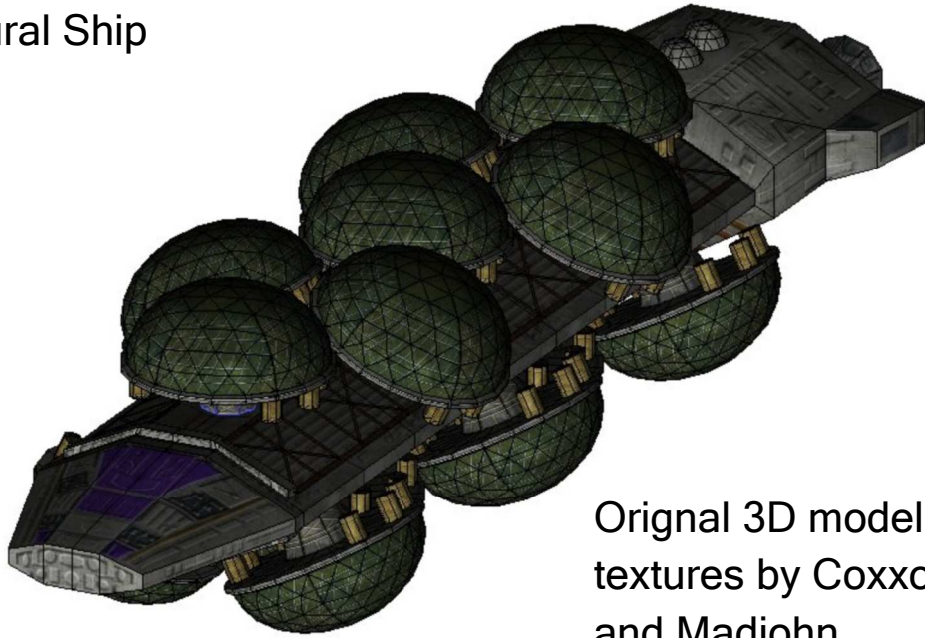


Battlestar Galactica  
Agricultural Ship



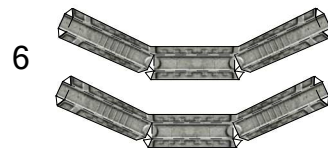
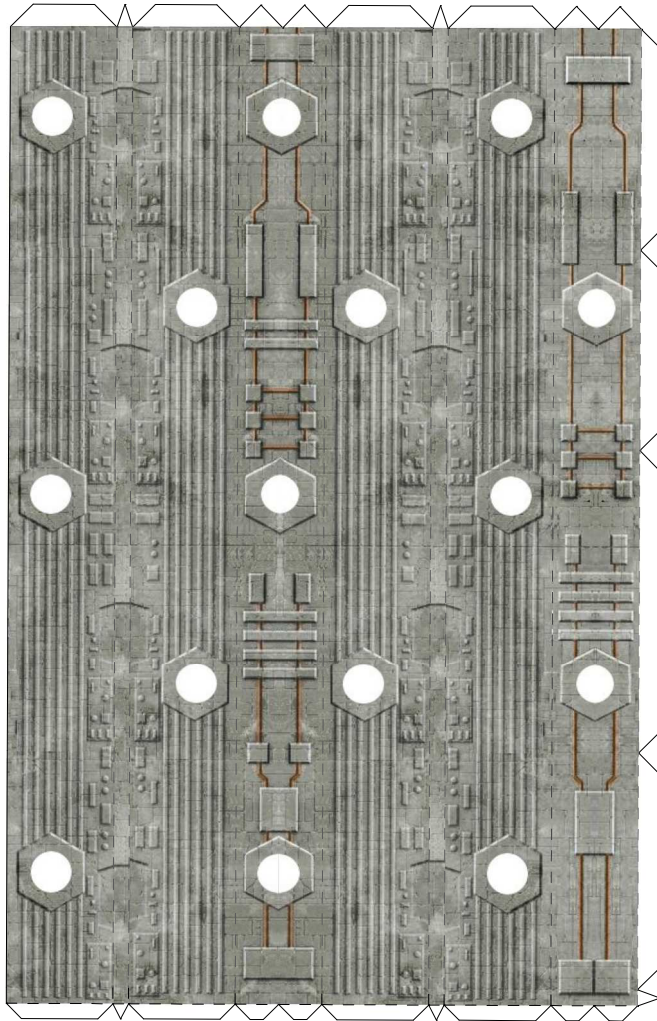
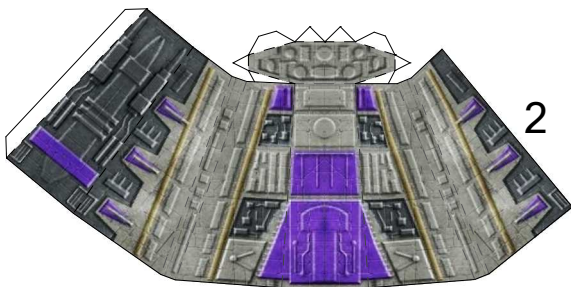
Original 3D model and  
textures by Coxson  
and Madjohn

Paper model conversion  
by  
Steve Bondy

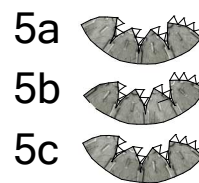
<http://stevebondy.ca>

This model is free for personal use

# Battlestar Galactica Colonial Fleet Agriculture Ship



1



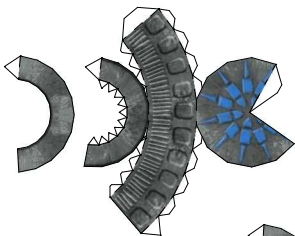
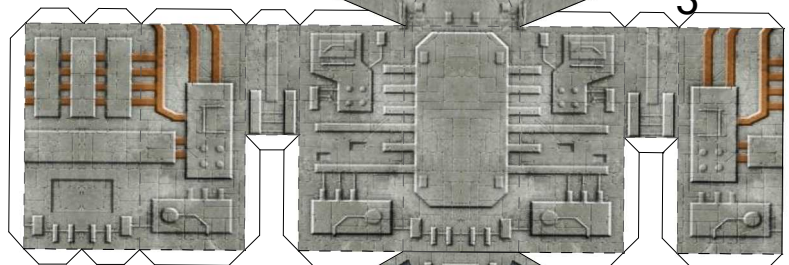
5a

5b

5c

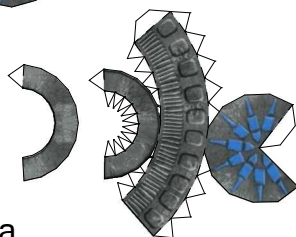


3



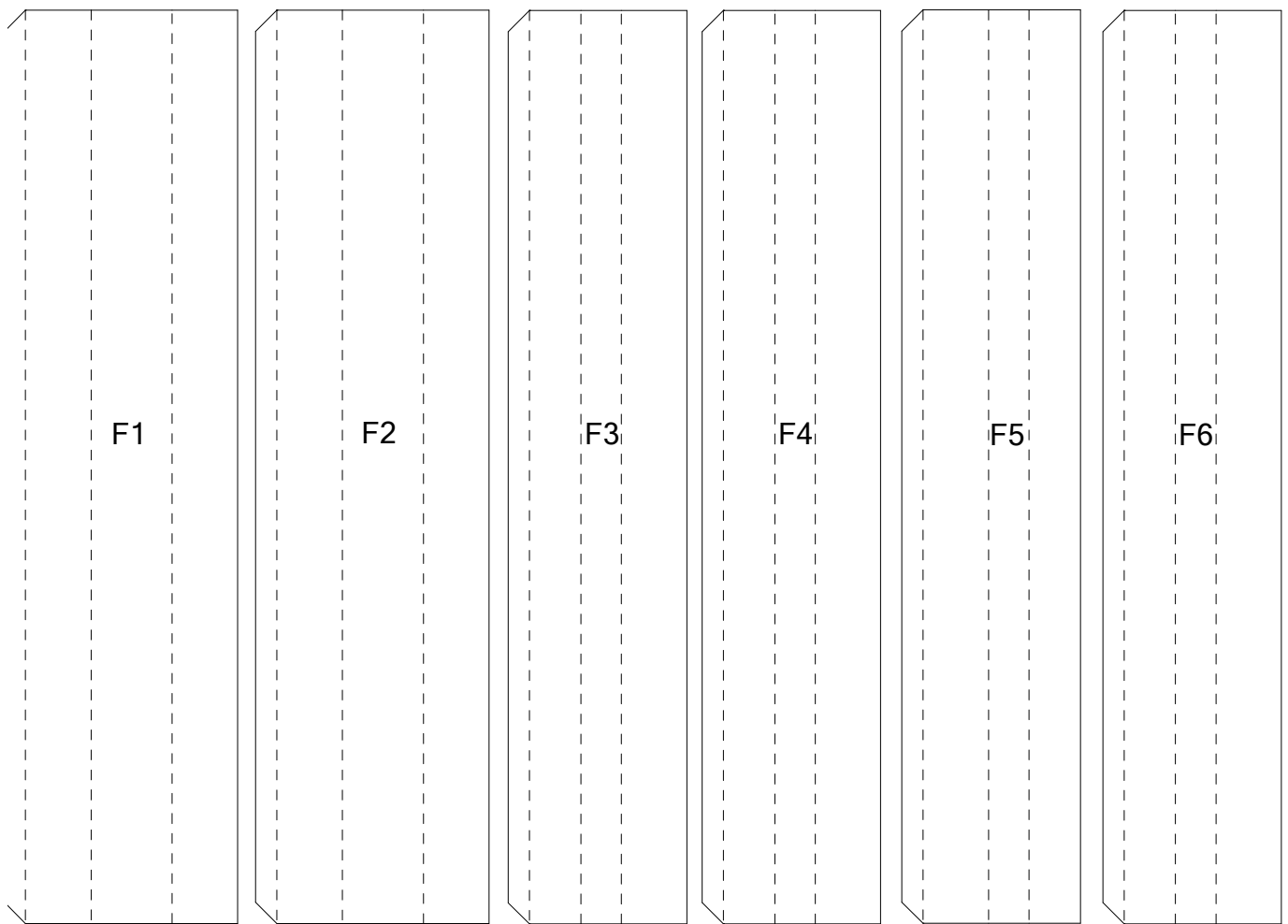
Paper Model by  
Steve Bondy

<http://stevebondy.ca>

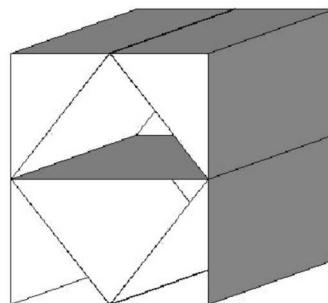
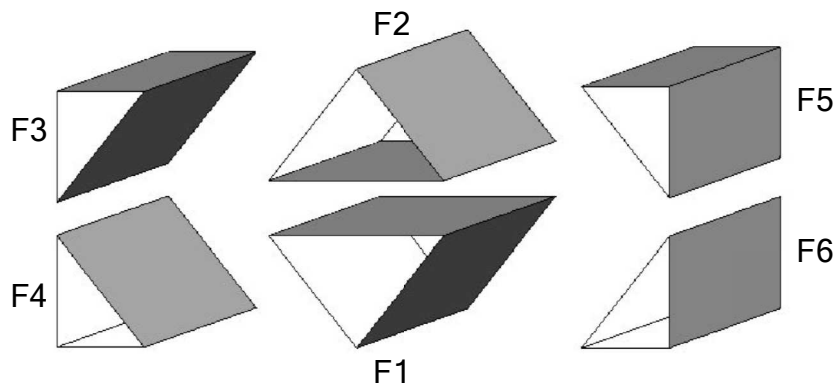


4a

4b



U  
P  
C



Main Hull former/Reinforcement

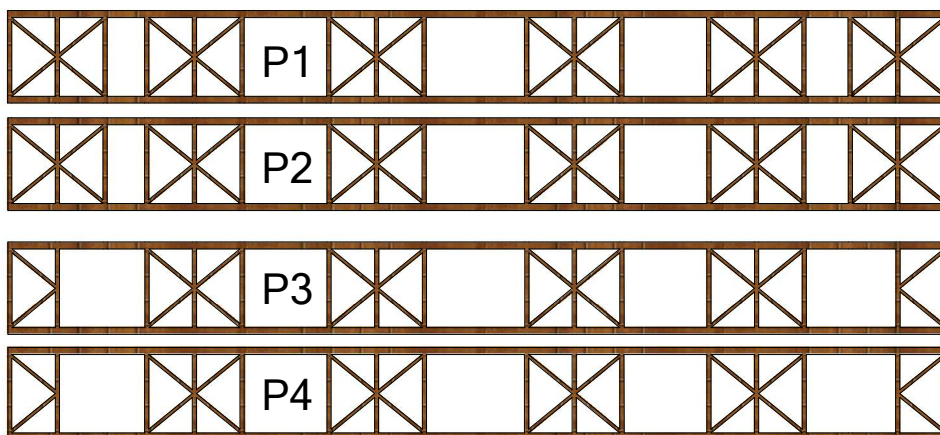
Paper model by  
Steve Bondy

<http://stevebondy.ca>

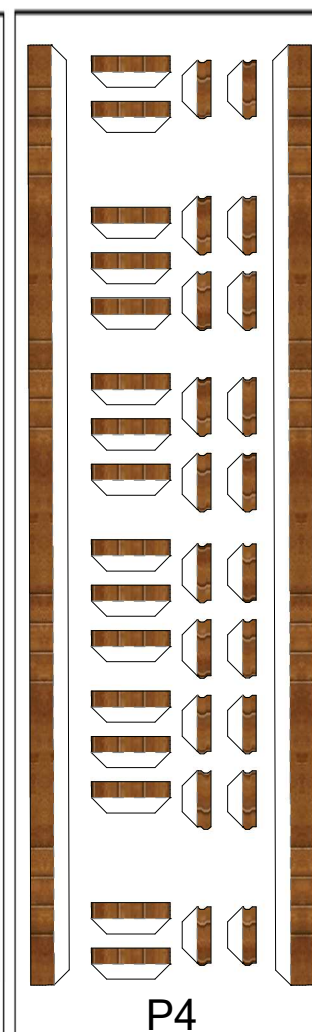
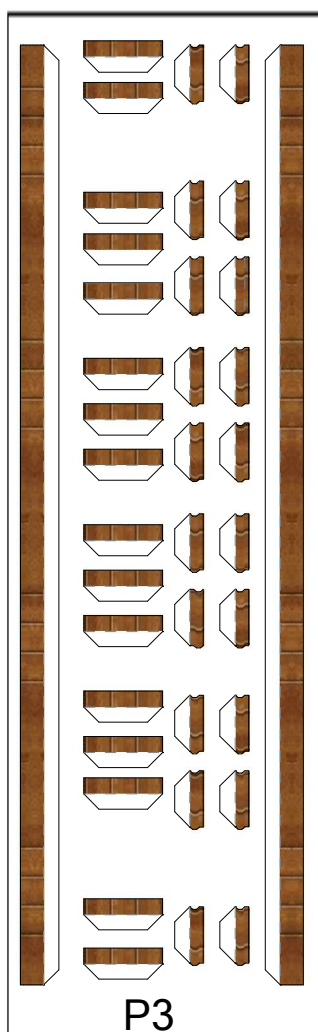
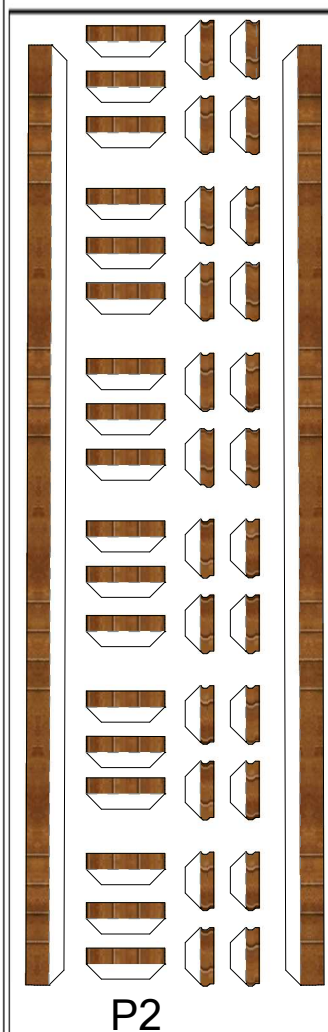
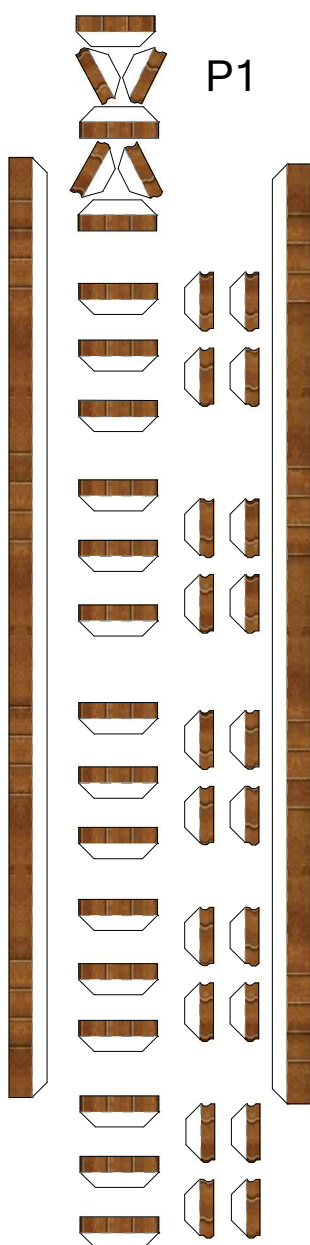
Upper Piping

Use these for simple, easy pipes. Laminate to 0.5mm card and glue on.

Lower Piping



For a real challenge, use these to make round pipe work. Use the simple pipes above as layout guides.

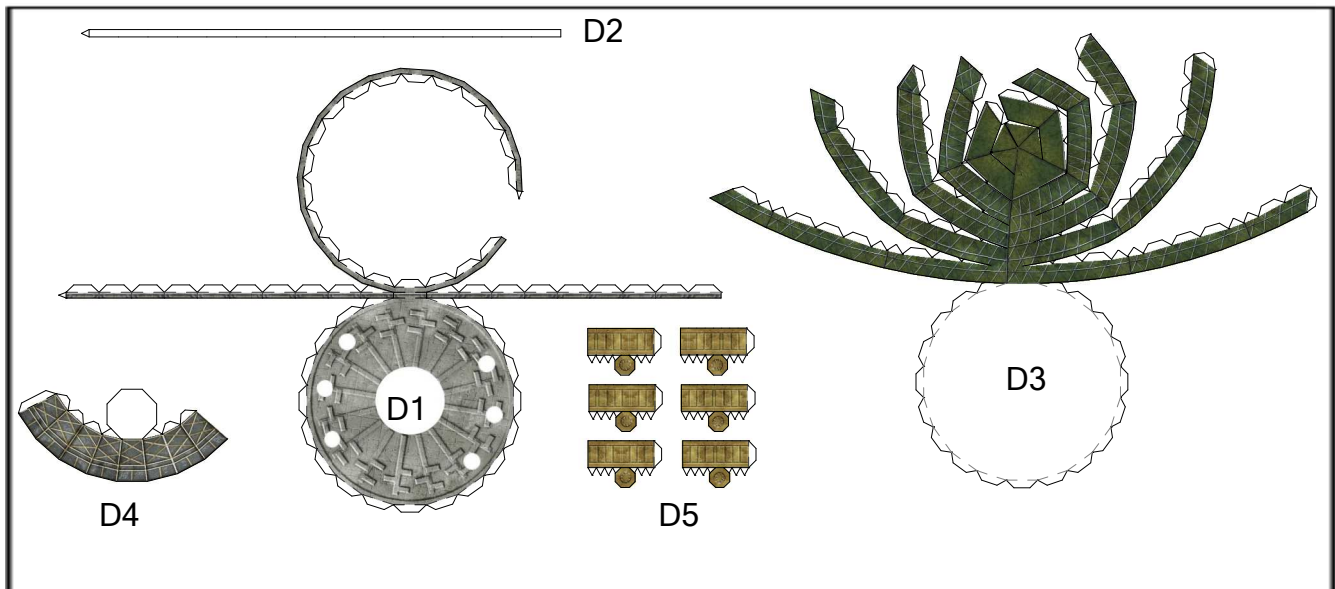
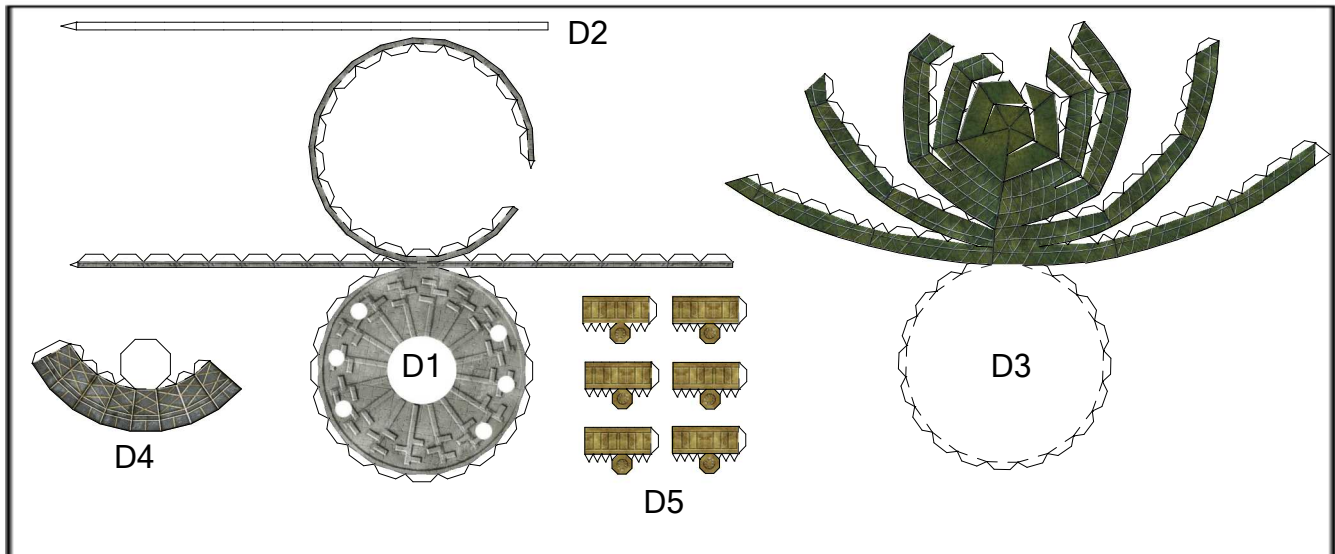


Paper model by  
Steve Bondy

<http://stevebondy.ca>



Print 5 copies, for 15 Domes



Paper model by Steve Bondy <http://stevebondy.ca>

